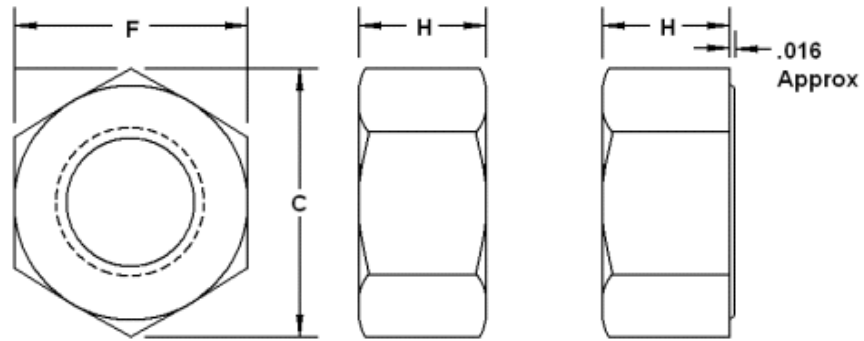


## SAE Hi-Nuts



Finished Pattern Nuts

Grade 2

Plain = NHI020----

Zinc = NHI020----Z1

Nominal Size	F	H	Weight Per C
	Width Across Flats	Thickness Hex Nut	
3/8	9/16	21/64	2.4
7/16	5/8	3/8	3
1/2	3/4	7/16	7
9/16	7/8	31/64	9
5/8	15/16	35/64	11
3/4	1 1/8	41/64	18
7/8	1 1/4	3/4	27.5
1	1 7/16	55/64	42
1-1/8	1 5/8	31/32	55
1-1/4	1 13/16	1-1/16	132
1-1/2	2 3/16	1-9/32	142

Dimensional specifications per ASME B18.2.1